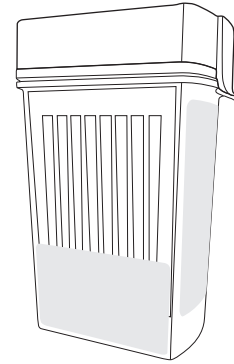


# PROCEDURE CARD

- Bring tests and specimens to room temperature (15-30°C/59-86°F) before use. Donors should avoid placing anything (including food, drink, gum and tobacco products) in their mouth for at least 10 minutes prior to specimen collection.
- The oral fluid specimen should be collected using the collector provided with the kit. No other collection devices should be used with this drug test.

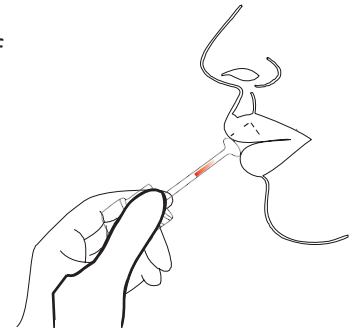


**A**

Using the provided collection swab, have donor sweep inside of mouth (cheek, gums, tongue) several times, then hold swab in mouth until color on the saturation indicator strip appears in the indicator window of collection swab. **Important: Do not bite, suck, or chew on the sponge.**



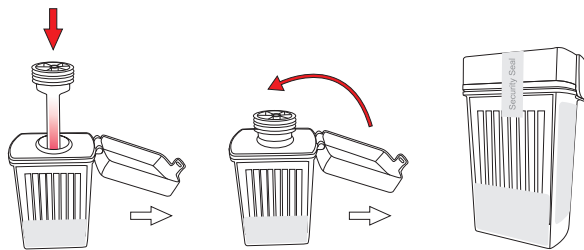
NOTE: If after 7 minutes, color on the saturation indicator has not appeared in the indicator window, proceed with step B of the test.



**B**

Remove collection swab from mouth and insert the sponge into the screening device until it touches the bottom. Push cap until the cap locks in place in the bottom of the device.

**Note:** Once the collection swab locks in place, the device is alright with tamper evident and ready to be disposed or sent to lab for confirmation (on presumptive positive result)

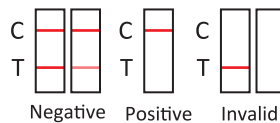
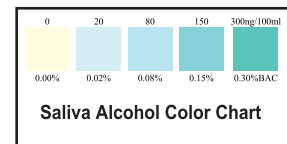
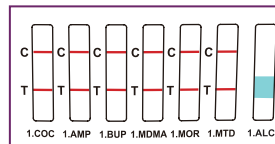


**C**

Put test cup upright on flat surface and keep upright while test is running. Wait for the colored bands to appear in test results area. Read results at 10 minutes.

If applicable, read saliva alcohol pads at 3 minutes.

已修改



PLEASE NOTE: If these instructions are not followed, the drug test will not work! If you are having trouble getting the test to work, then you have not collected enough saliva! The sponge collector must be completely saturated (donor should bite down on sponge so that there are no hard places in the sponge)!